



Peruvian International Trade Single Window



Peruvian Tax Collection and Customs Administration
www.sunat.gob.pe

Outline of the Presentation



- Definition of the Peruvian Single Window
- Background
- Scope of the Peruvian Single Window – 1st Phase
- Project Organization
- Participants
- Legal Support
- Schedule
- Progress
- Next Steps
- Future Peruvian Customs Clearance Procedures

Definition of the Peruvian Single Window



The Peruvian Single Window has been defined as:

”The integrated system that allows parties involved in international trade to lodge documents and information for fulfil import, transit and export-related regulatory requirements, by electronic means.”

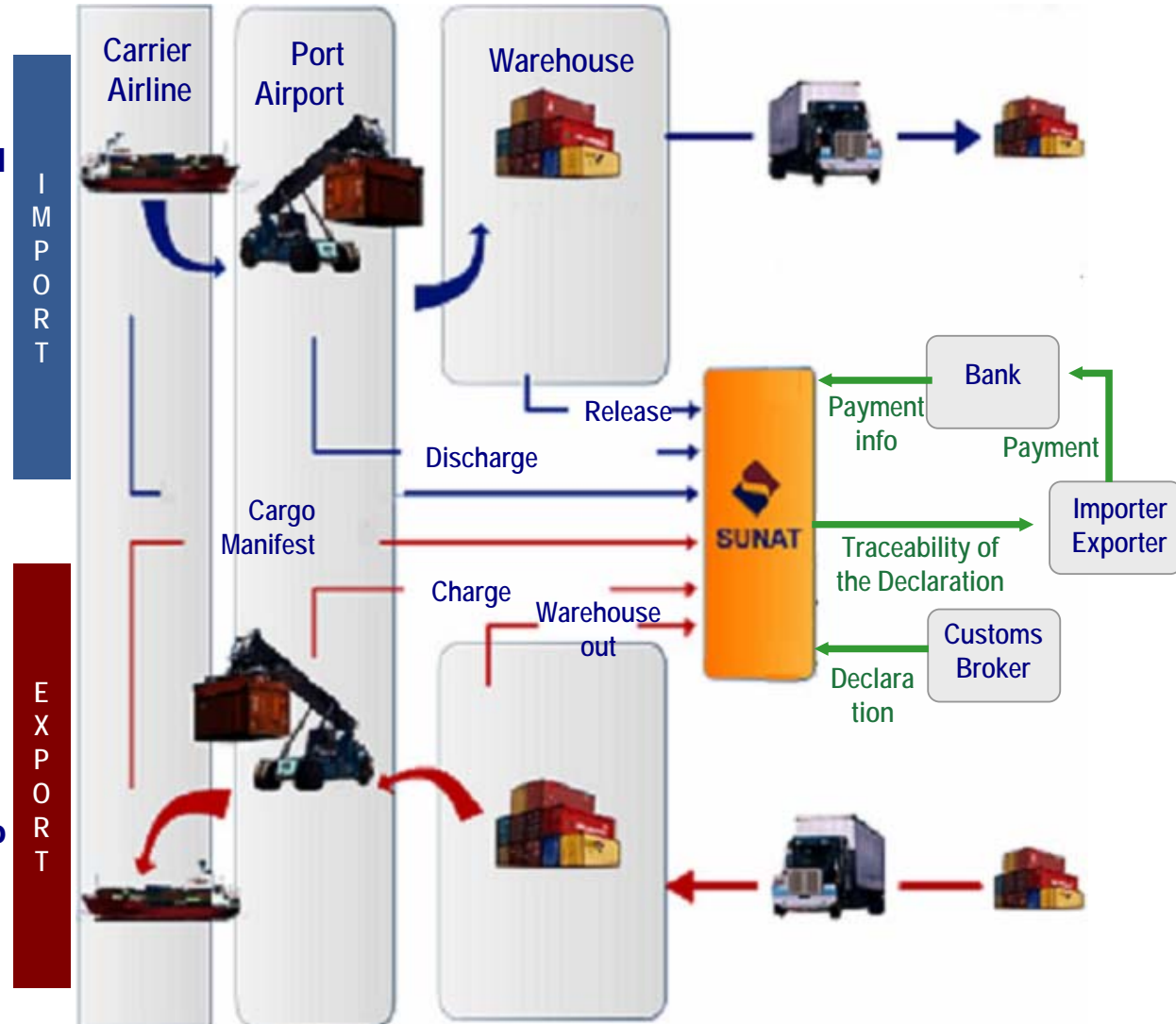
Considering 3 objectives:

- 1. To have a faster clearance with simple and standardized procedures.**
- 2. To utilize mainly electronic means.**
- 3. To allow electronic integration among agencies of the public sector.**

Background



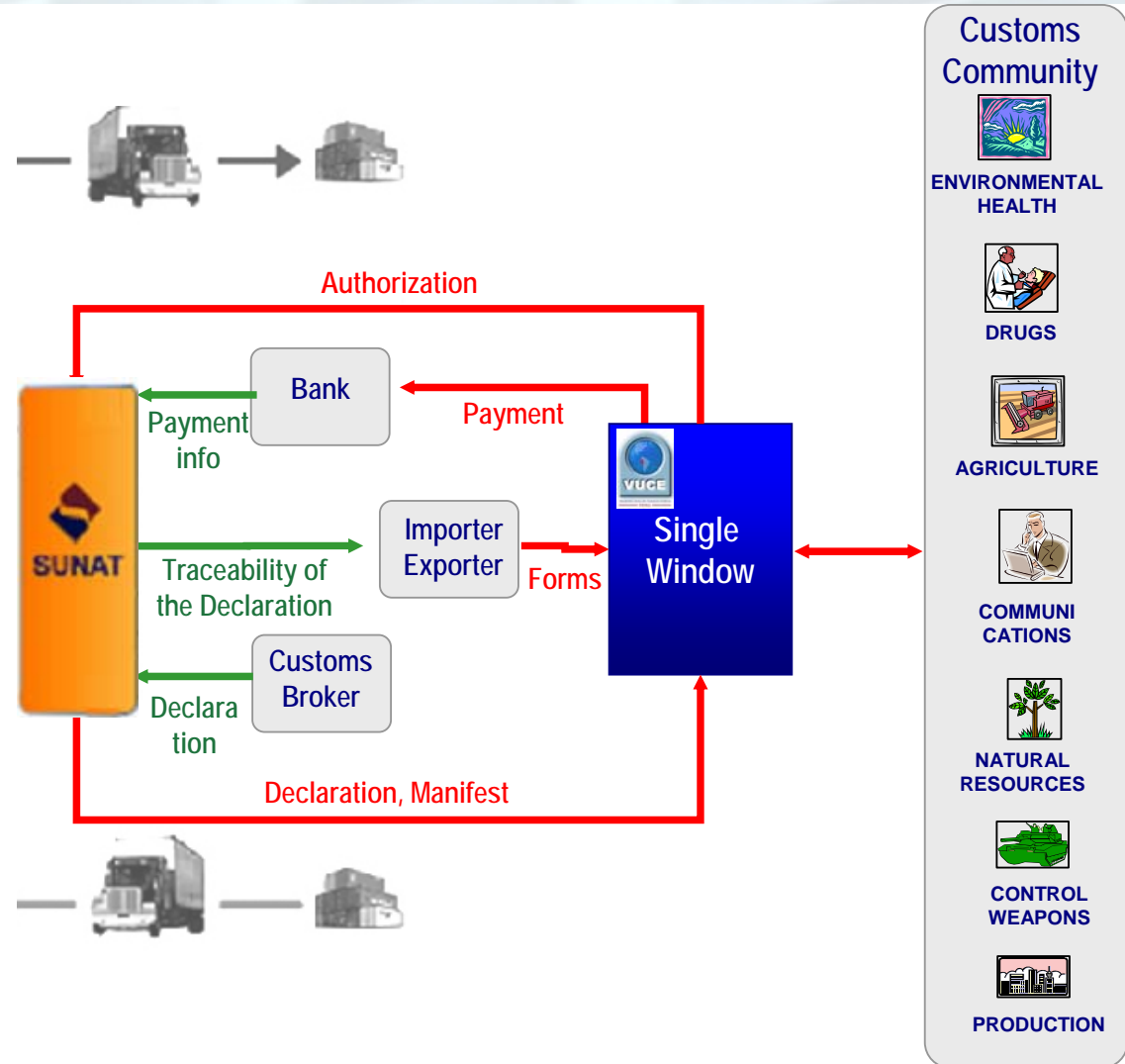
- 1993** Integrated System for Customs Management – SIGAD
- 1994** Electronic Cargo Manifest by VAN and based on EDIFACT standard for Maritime and Air Customs Offices
- 1996** Electronic Declaration for Import and Export by secure mail
- 1997** Transactional Website
- 2000** Electronic Payment of Duties and Taxes
- 2003** Electronic Declaration for Import and Export by Web
- 2004** Electronic Messages to importers providing the declaration traceability
- 2005** Electronic Cargo Manifest by Web for Land Customs Offices
- 2007** Simplified Electronic Export Clearance for SME



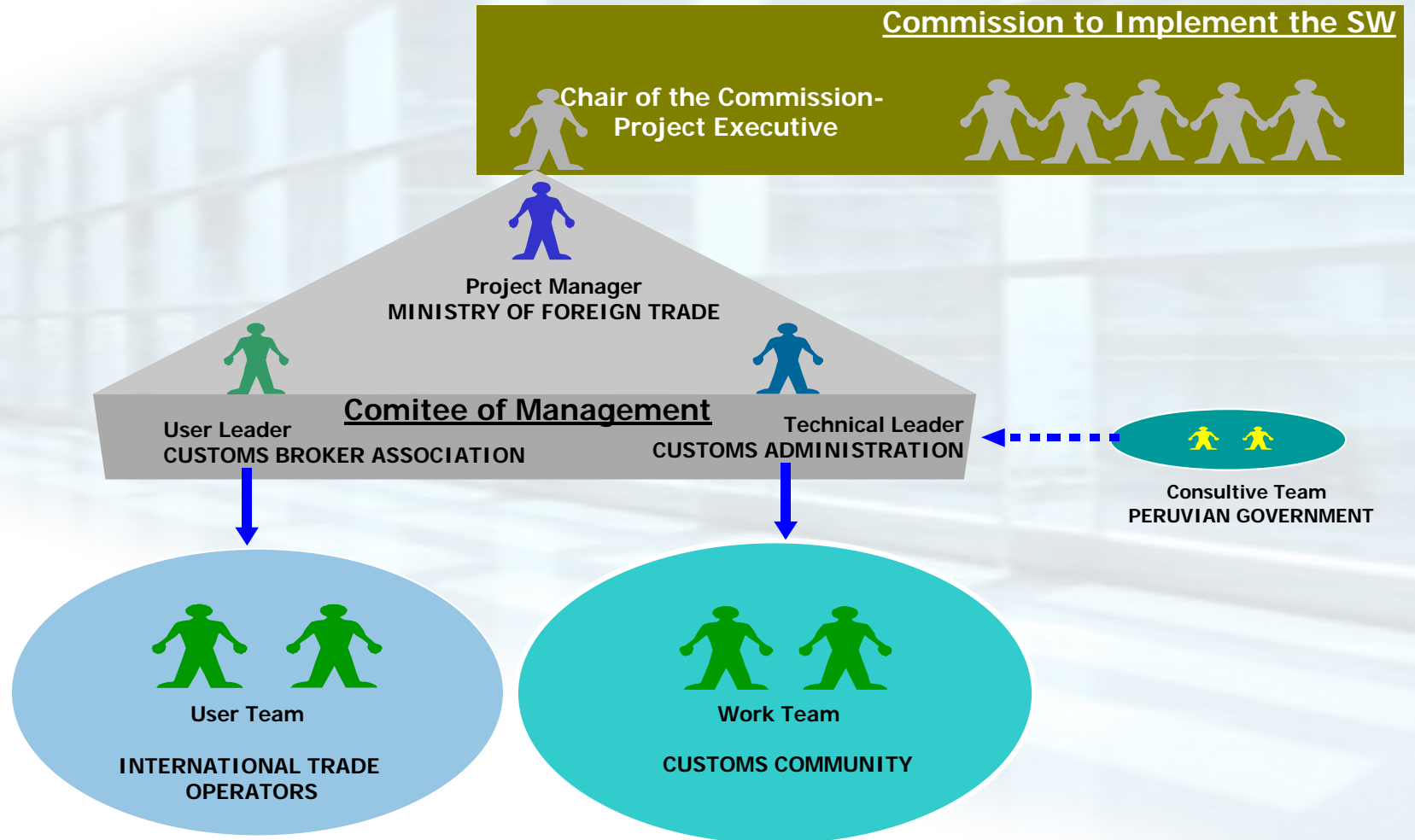
Scope of the Peruvian Single Window – 1st Phase



- Unified system for providing authorizations to importers and exporters.
- Fast, integrated, simple procedures according to international standards.
- Electronic standardised documents and information recognized as valid.
- Integrated controls that allows an effective risk management.
- Security and high availability of the service provided .



Project Organization



Participants



Association of Customs Brokers



Association of Exporters



National Association of the Industry



Association of International Traders



Lima Chamber of Commerce



Association of Freight Forwarders



Peruvian Central Government



Ministry of Foreign Trade and Tourism



Tax Collection and Customs Administration



Ministry of Economy and Finances



National Port Authority



National Service of Agrarian Health



Directorate of Medicines and Drugs



Directorate of Environmental Health



Ministry of Production



Ministry of Transport and Communications



Directorate of Weapons and Explosives Control



National Institute of Natural Resources



Technological Fishing Peruvian Institute

Legal Support



- In 2005 the Ministry of Foreign Trade conducted a study to determine the implementation of a Single Window (SW).
- In June 2006 as an initiative of the Customs Administration and the Ministry of Foreign Trade, we started the SW Project.
- In August 2006 the Central Government created the Commission for implementing the SW: Government and Private Sector.
- In January 2007 the Central Government approved the “Law for International Trade Facilitation”.
- In February 2007 was approved the Project Plan for implementing the SW.
- In October 2007 the Central Government approved the Regulation for implementing the SW.

Schedule



2006 – 2007

Starting

- Creation of the Peruvian SW Special Commission
- Approval of the Project Plan
- Feasibility study for investment
- Inventory of informatics' resources - 8 agencies

Development

- Pilot - Integration among Customs Administration and 5 other Agencies
- Modification of the Legal Framework
- General Process Modeling

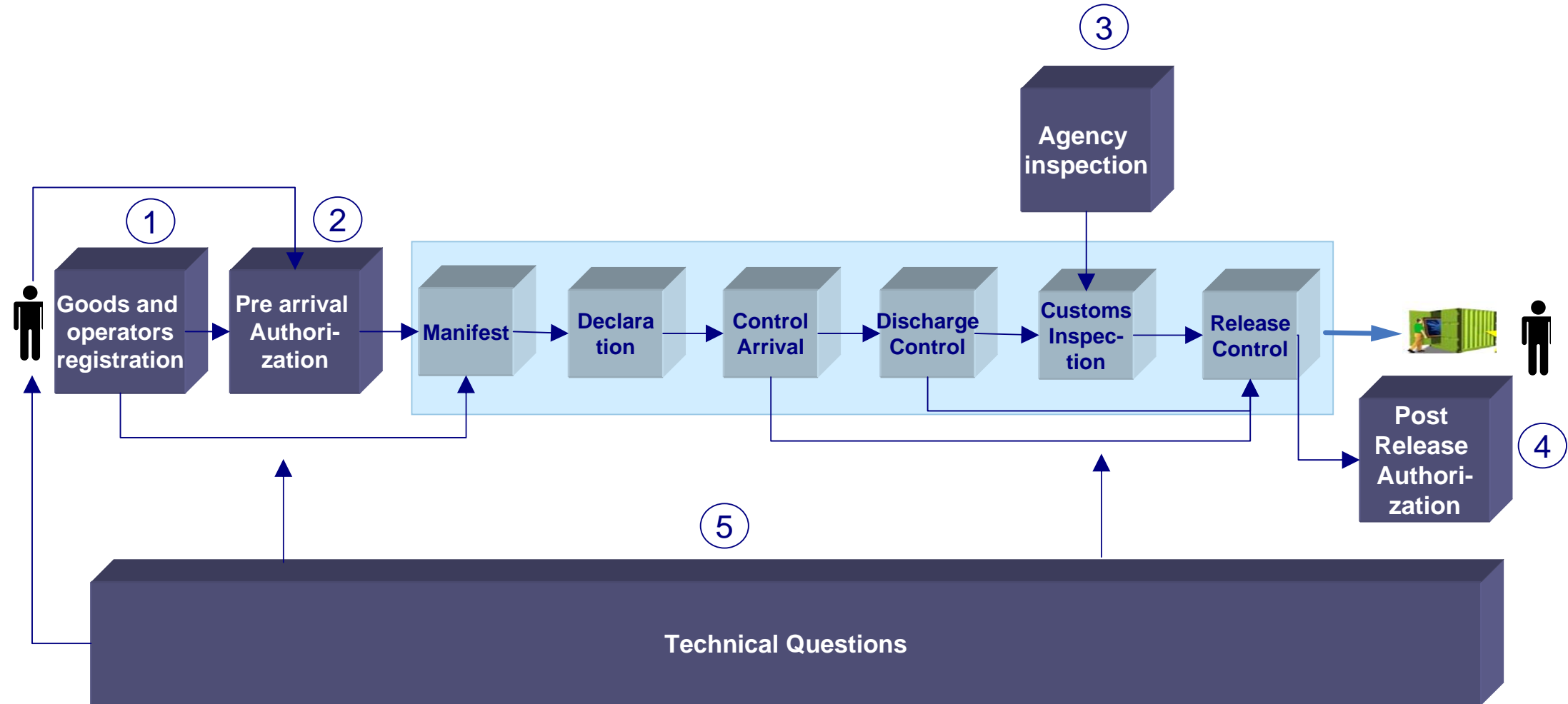
2008 – 2009

- Implementation of the SW Informative Website
- Implementation of the Electronic Payment
- Elaboration of specific procedures and specific laws.
- SW Data Harmonization
- Development of the Information System
- Training

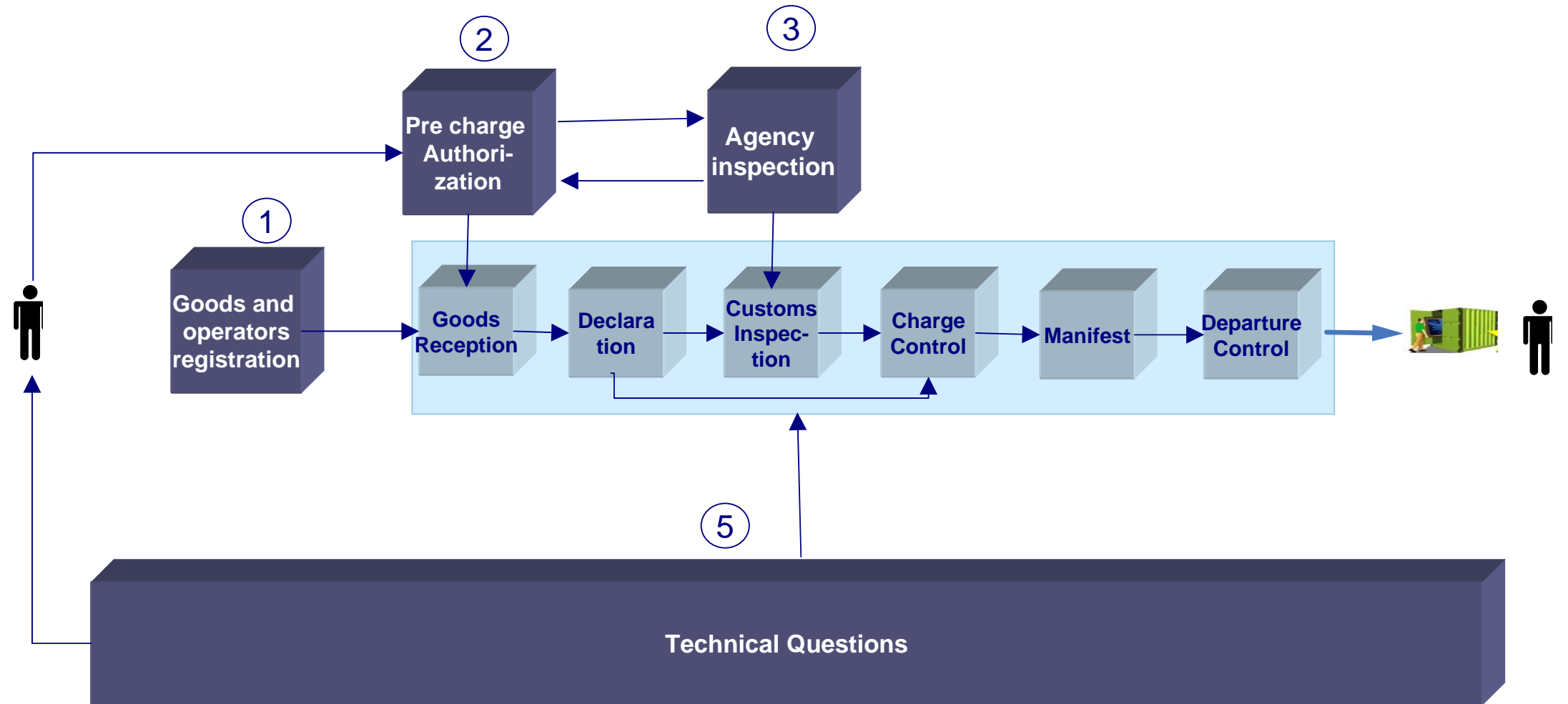
Implementation

- Implementation

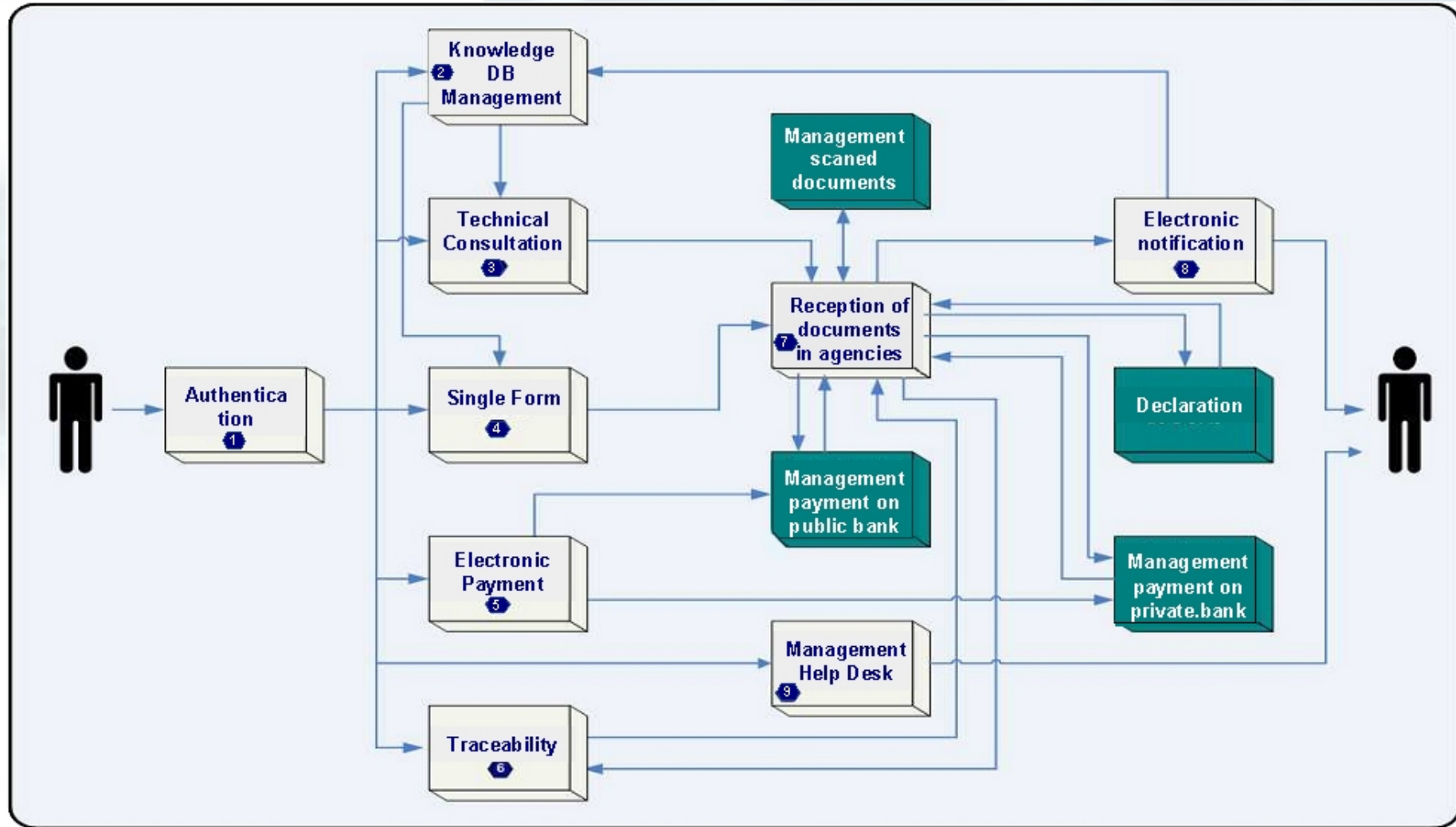
Progress: Model of SW General Process Macroprocess for Import



Progress: Model of SW General Process Macroprocess for Export

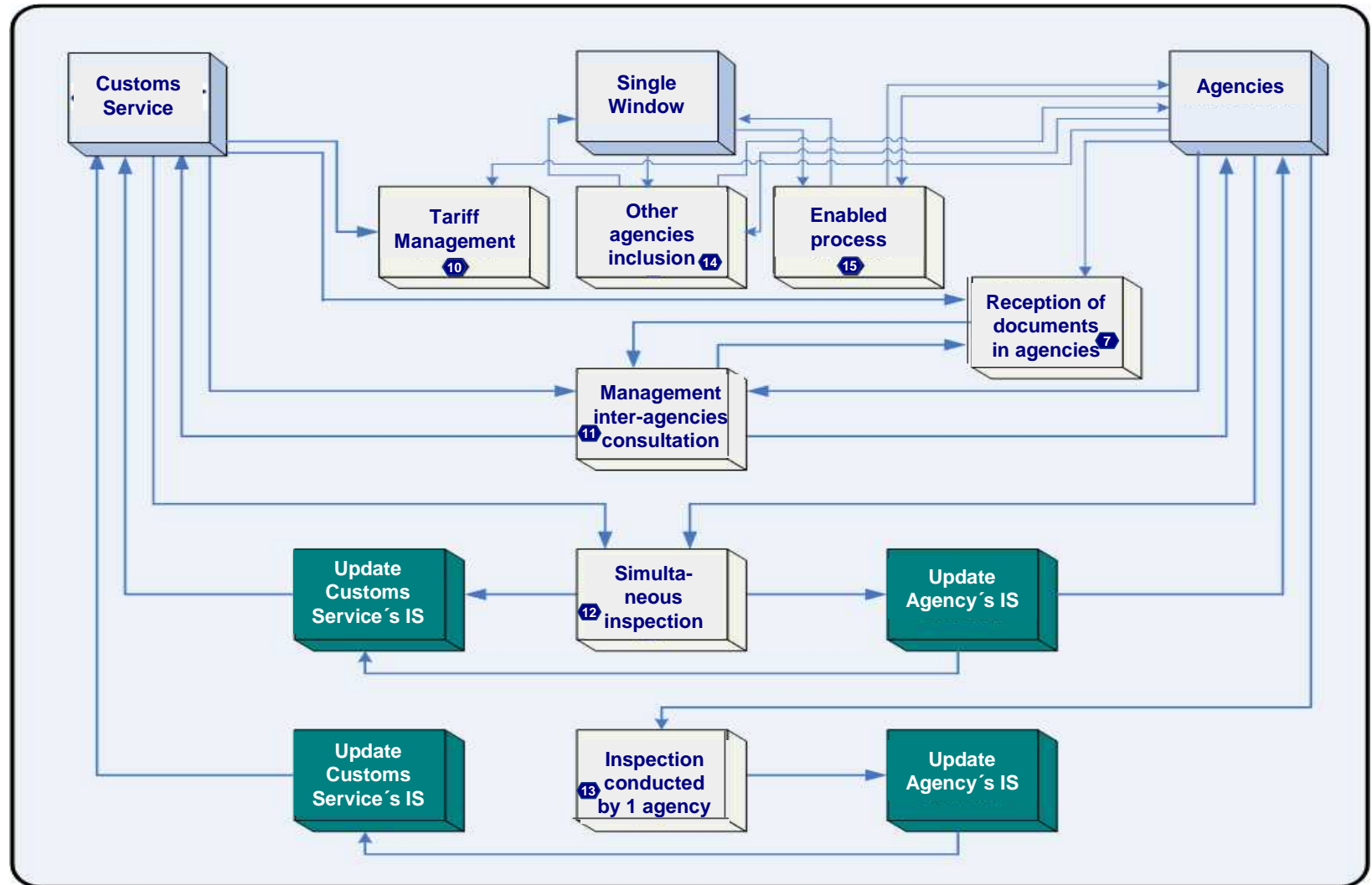


Progress: Model of SW General Process SW Services



Progress: Model of SW General Process

SW Process integrated



Progress: SW Data Harmonization



- More than 50% of our Cargo Manifest Data Model fields according to WCO Data Model
- Project Plan to elaborate the new international trade integrated data model based on WCO Data Model in progress.

Version: 04.11.2005 Data set for version 2.0 of the WCO Customs Data Model - "CARGO REPORT EXPORT" - (CR)

Comparison Between our current Cargo Manifest data model vs WCO Data Model v 2.0											
Modelo grupo	ID	NWME	Definition	DATA MODEL	UD	NWME	CR	CR	FORMAT	Code remarks	
SI	001	Declaration name, coded	Code specifying the name of a document.	Declaration	1008	Document.Type.Code	M	1	an_3	EDFACT codes	
SI	002	Declaration reference number	Reference number identifying a specific document.	Declaration	1004	Document.Identifier	M	1	an_35		
	003	Additional document reference number	Identifier of a document providing additional information.	AdditionalDocument	1004	Document.Identifier	C	1	an_35		
SI	006	Sequence number	Number indicating the position in a sequence.	Consignment/ConsignmentItem/Customs Goods/Batch/Customs Division	1050	Sequence.Position.Identifier	C	1	n_5		
	007	Previous Customs document number	The number of a previous Customs document.	Previous Customs Document	1004	Document.Identifier	C	1	an_35		
	008	Trader reference	Reference assigned by a trader to a declaration.	UCR	1007	CustomsDeclarationDocument.TraderAssignedIdentifier	C	1	an_35		
	010	Ship/stay reference	Identifier of the stay of a means of transport in a port or airport.	BorderTransportMeans	1009	TransportMeans.StayIdentifier	C	1	an_35		
	011	Carrier split consignment indicator	Indicator assigned by the carrier for each load of a split consignment.	Consignment	1100	SplitConsignment.CarrierAssignedIdentifier	C	1	rf	0 = no, 1 = yes	
SI	015	Transport document number	Reference number to identify a document evidencing a transport operation.	TransportContractDocument	1004	Document.Identifier	C	1	an_35		
	016	Unique consignment reference number	Unique number assigned to goods, both for import and export.	UCR	1202	Consignment.Identifier	C	1	an_35	WCO (E01458) or equivalent.	
	017	Message function, coded	Code indicating the function of a document.	Declaration	1222	Document.Function.Code	C	1	n_2	EDFACT codes	
	019	Document message status, coded	Code specifying whether the document is complete or incomplete.	Declaration	1327	Document.Status.Code	C	1	an_3	EDFACT codes	
SI	020	Goods declaration number (Customs)	Reference number, assigned or accepted by Customs, to identify a goods declaration.	Declaration	1424	GoodsDeclaration.DocumentCustomsIdentifier	C	1	an_35		
SI	027	Duration of stay	The number of days consignment is under transit control.	TransitControl	0004	Quantity.Quantity	C	1	n_2		
SI	028	Birth date of Master/operator	Birth date of master of means of transport e.g. vessel master, pilot or driver.	Master	2481	Person.Birth.Date.Time	C	1	rf (CCYMMDD)		
SI	034	Delivery destination	The address to which goods are to be delivered. Address, region and/or country as required by national legislation or according to national requirements.	DeliveryDestination	3001 3161 3223 3251 3307	Address	C	2			

30/05/2008 SUNAT 1 of 18

Next Steps in the Project



- To elaborate specific procedures and rules for each Agency according to the Model of General Process approved.
- To conduct the SW data harmonization based on the WCO Customs Data Model.
- To develop the Information System that will support the specific procedures for each agency.

Future Peruvian Customs Clearance Procedures

- Transmission in advanced of the Cargo Manifest and the Customs Declaration using international standards:
 - International Trade Single Window – Phase 1 – Restricted goods
 - International Trade Single Window – Phase 2 – Port Community
 - Data Harmonization with other agencies based on the WCO Customs Data Model
- Agencies' fees electronic payment, including Business & Home Banking solutions
- Differed payment for the immediate clearance of the imported goods
- Integration with other Customs and SW of the world
- Intensive utilization of intelligent systems
- New Website with personalized services according to our stakeholders requirements





Peruvian International Trade Single Window



Thank-You

María Del Rosario Huamán
mhuamanc@sunat.gob.pe

Peruvian Tax Collection and Customs Administration
www.sunat.gob.pe